

THE GATEWAYS THE POPLARS

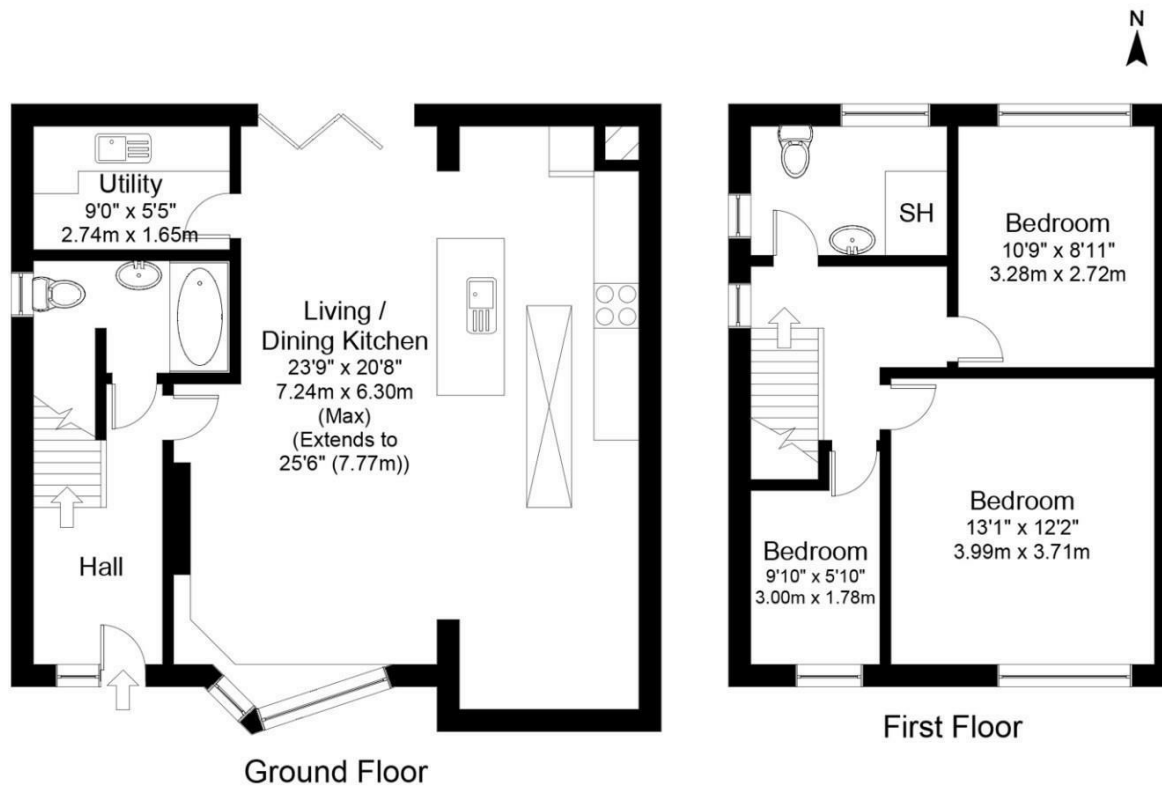
LEEDS, LS16 9DL

£480,000
FREEHOLD

Welcome to The Gateways, a stunning three-bedroom detached home nestled in the heart of Bramhope. This beautifully presented property boasts a high-end modern specification throughout, complemented by an abundance of natural light that fills every corner.

MONROE

SELLERS OF THE FINEST HOMES



Gross internal floor area (approx.): 100.0 sq m (1,077 sq ft)
For illustrative purposes only. Not to Scale. Copyright © Zenith Creations.



Energy Efficiency Rating		
	Current	Potential
Very energy efficient - lower running costs		
(92 plus) A		
(81-91) B		
(69-80) C		
(55-68) D		
(39-54) E		
(21-38) F		
(1-20) G		
Not energy efficient - higher running costs		
England & Wales		
		EU Directive 2002/91/EC

Agents Note: Whilst every care has been taken to prepare these particulars, they are for guidance purposes only. All measurements are approximate and are for general guidance purposes only and whilst every care has been taken to ensure their accuracy, they should not be relied upon and potential buyers/tenants are advised to recheck the measurements

Alwoodley Sales
716 King Lane Alwoodley
Leeds
West Yorkshire
LS17 7BA

0113 870 4443
hello@monroestateagents.com
www.monroestateagents.com

MONROE

SELLERS OF THE FINEST HOMES